

## Dorothy Holman Centre

The smaller of our two main venues, the centre is used on a regular basis for dance groups, martial arts, youth groups and fitness classes – but it's entirely up to you and your ideas.

Step outside the Centre and you're just a few metres away from the Exe Estuary, with wonderful views across the water to Haldon Forest in the distance.

Ideal any time of the year, but in the summer this is a glorious location for a party gathering. Inside there's a pool table and, if you fancy a mid-activity break, there's outdoor table tennis, a boule pitch and the children's play park adjoining the Centre.



**CAPACITY** 100

### THE KITCHEN

Oven, hob, fridge, cutlery, mugs and some plates, washing up facilities

### FACILITIES

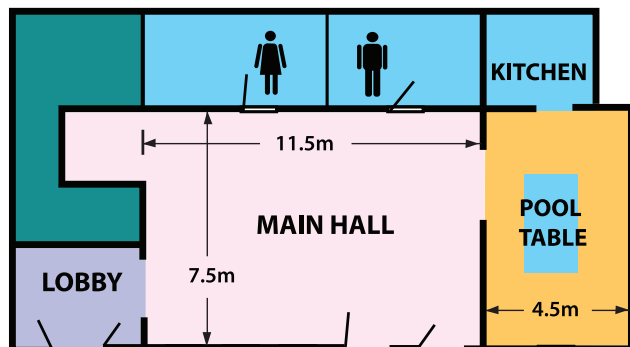
Tables and chairs - enough to seat 40 - 50 (some children's chairs)

**TOILETS** Ladies, gents and disabled with changing table

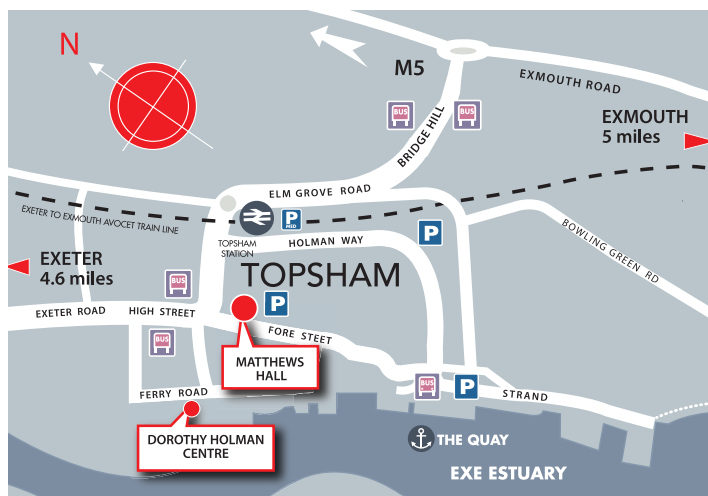
**POOL TABLE** **WI-FI**



Otter Morris Dancers use the Centre to rehearse



THE AFFORDABLE CHOICE OF  
**VENUE HIRE**  
**MATTHEWS HALL**  
AND DOROTHY HOLMAN CENTRE  
**T O P S H A M**



### MATTHEWS HALL

Fore Street  
Topsham  
EX3 0HF

### DOROTHY HOLMAN CENTRE

Ferry Road  
Topsham  
EX3 0JW

To find out more or to book one of our venues, email the Hall Manager: [bookings@topshamcommunityassociation.co.uk](mailto:bookings@topshamcommunityassociation.co.uk)

For further information about the venues and what's on, please visit: [Topshamcommunityassociation.co.uk](http://Topshamcommunityassociation.co.uk)



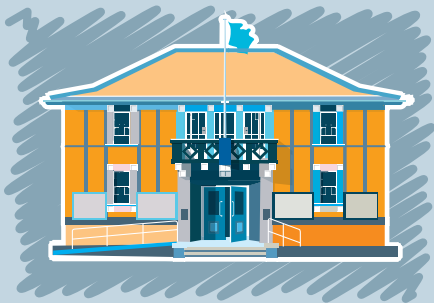
Design: [www.aylwyn.co.uk](http://www.aylwyn.co.uk)

All details correct at the time of going to print

THE AFFORDABLE CHOICE OF  
**VENUE HIRE**  
**MATTHEWS HALL**  
AND DOROTHY HOLMAN CENTRE  
**T O P S H A M**



FROM 10 - 300 PEOPLE AND FULLY EQUIPPED FOR ANY EVENT



The historic town of Topsham, on the beautiful Exe Estuary, provides a unique location to hold a concert, wedding reception, talk, trade fair, art group or fitness class.

Just two miles outside of Exeter and within ten minutes of the M5, we offer two competitively priced venues to suit the scale of your event and budget.

And when you need a break there's a café in the Hall, as well as some wonderful pubs and eateries nearby, not to mention a wealth of independent shops.



The Hall is ideal for concerts, plays and films



Market and craft fairs



Wedding reception at Matthews Hall. Photo: courtesy of Joanne Withers

## Matthews Hall

**One of the largest town venues of its kind in Devon,** Matthews Hall has all the facilities you might need. As well as a large raised stage to put on a bit of a show, the hall is also equipped with a cinematic digital projector. So, if you want an event with a touch of character, far from a soulless modern facility, then you've found it in this wonderful venue. Our trained staff are on hand to help you with technical and practical advice.

## The Studio

**The Studio**, as the name suggests, is the popular choice for craft workshops, small exhibitions, talks and meetings. Overlooking the main street, the room is secluded and away from other activities going on in the main hall. This is the ideal room for regular small activities and those with a limited budget.



Art workshops

**The Hall and Studio are licensed for alcohol.**

**MAIN HALL** Capacity -  
Seated 200 or Standing 308  
Available Tables – 19 6ft, 16 5ft  
Available Chairs – 191

**THE STUDIO** Capacity -  
Seated 60 or Standing 60  
Available Tables – 9 5ft  
Available Chairs – 34

**CHANGING ROOM**  
Standing Max 20

**STAGE**  
Curtains Manual pull-ropes  
Pelmet Manual pull-ropes  
HDMI For PC/Mac link to Control Room projector (Left of stage) Mains  
Sockets for powering laptop Small Table for presenters

**LIGHTING, SOUND and EQUIPMENT** A printed guide is available

**WI-FI** Matthews Hall has a high-performance installation.  
Download speed 350MP

**KITCHEN FACILITIES**  
**THE MAIN HALL** kitchen is equipped with work surfaces, sink, cooker, fridge and a microwave oven

**THE STUDIO** has a small kitchen area with a work surface, sink and microwave oven

**DIGITAL CINEMATIC PROJECTOR**  
There is also a back-up, ceiling-mounted projector in the Hall

On-stage 'drop down' screen Amplifier /5.1 channel speaker system

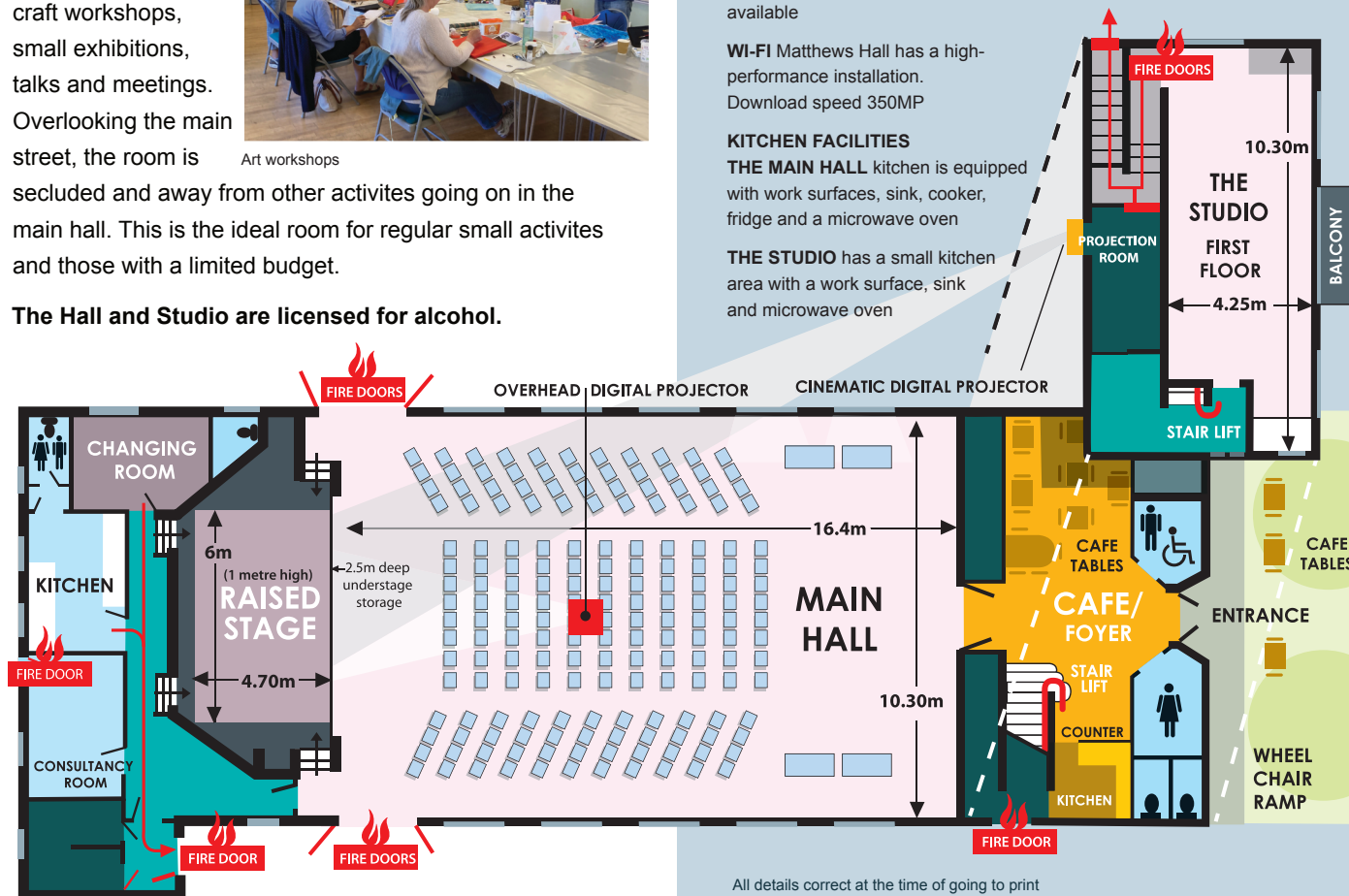
Mixing Desk 4 channel. Microphones  
Hand-held radio mic  
Lapel/Lavalier/head radio mic

DVD Player Suitable for Cinema quality projection

**Loop Hearing Aid system**

**Access** Ramp to Main Hall.  
Stair Lift to Second Floor

A more comprehensive specification list is available on the website -  
[topshamcommunityassociation.co.uk](http://topshamcommunityassociation.co.uk)



All details correct at the time of going to print